

COVID-19 Situation Report for Health Care Providers, Saturday, August 8, 2020

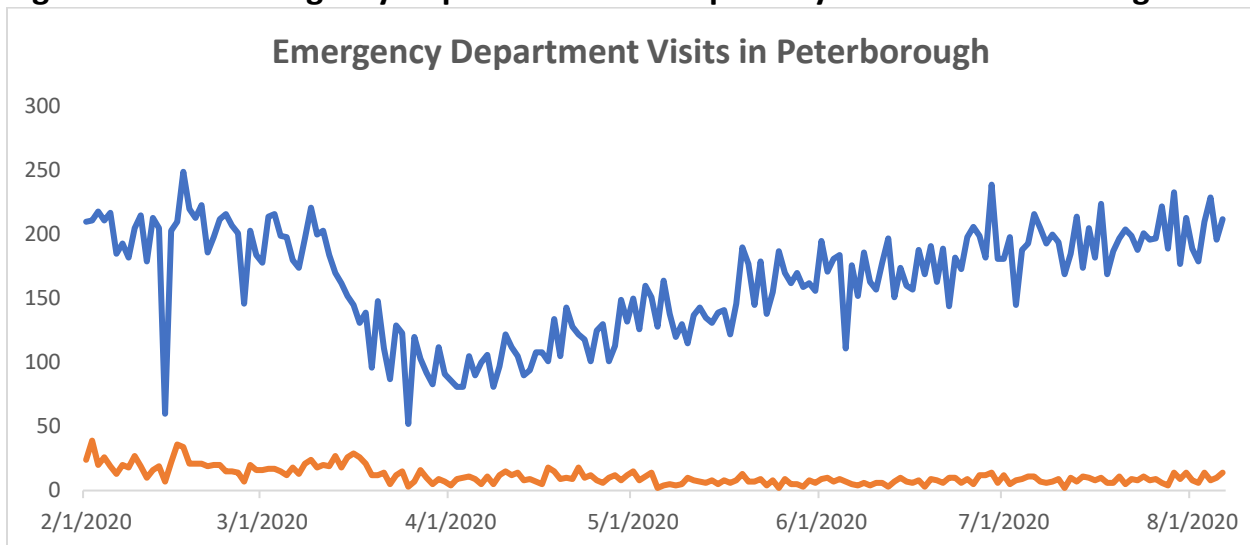
Cumulative local data for City and County of Peterborough, Hiawatha and Curve Lake First Nations

Confirmed positive ¹	99
Individuals tested ²	>22,250
Active cases	3
Resolved ^{1,3}	94
Deceased ^{1,4}	2

Current Local Institutional Outbreaks¹:

None

Figure 1: Total Emergency Department and Respiratory Visits in Peterborough⁵



Highlights of cases in Ontario

- There are a total of 39,967 confirmed cases of COVID-19 in Ontario reported to date.
- Compared to the previous day, this represents:
 - An increase of 70 confirmed cases (percent change of -20.5%)
 - An increase of 1 deaths (percent change is not applicable)
 - An increase of 107 resolved cases (percent change of -9.3%)

¹This data is retrieved daily from the Integrated Public Health Information System (iPHIS) at 4:00 pm, reported to the Ministry of Health and posted on our website by 5 pm. Please note that the provincial website is updated the following morning at 10:30 am. Depending on the time of day, these two reporting sources may or may not be aligned.

² This data is retrieved from the Ontario Laboratories Information System (OLIS) at 9:00 am and posted on our website by 5 pm. Please note that there is a lag of several days between when a COVID-19 test is done and when a record of it appears in OLIS.

³ Resolved includes: Fourteen days following symptom(s) onset provided the individual has no fever and symptoms have improved for individuals at home OR two negative test results (obtained at least 24 hours apart) for hospitalized.

⁴ Deaths indicate cases who tested positive where COVID-19 may or may not have been the cause of death.

⁵ Data retrieved from Acute Care Enhanced Surveillance Application (ACES) database.

Summary of cases of COVID-19: Ontario, January 15, 2020 to August 7, 2020

Severity	Number	Percentage
Number of cases footnote 1[1]	39,967	N/A
Change from previous report (new cases)	70	0.2% increase
Resolved footnote 2[2]	36,131	90.4
Change from previous report	107	0.3% increase
Subset of all cases that are reported to be long-term care residents footnote 3[3] footnote 4[4] footnote 5[5]	5,901	14.8
Subset of all cases that are reported as a health care worker footnote 4[4] footnote 5[5] footnote 6[6] associated with long-term care outbreaks	2,601	6.5
Total number of deaths footnote 7[7]	2,784	7.0
Deaths footnote 7[7] reported for residents in long-term care homes footnote 4[4] footnote 5[5] footnote 6[6]	1,799	64.6
Deaths footnote 7[7] reported for health care workers footnote 5[5] footnote 6[6] footnote 2[2] in long-term care homes	8	0.3

Demographics - Ontario, January 15, 2020 to August 7, 2020

Case characteristics	Number
Male	18,617
Female	21,050
19 and under	2,380
20-39	12,262
40-59	12,010
60-79	7,237
80 and over	6,044

Testing - Ontario, January 15, 2020 to August 7, 2020

Testing	Number
Total tests completed footnote 8[8]	2,372,441
Total tests completed in the previous day footnote 9[9]	26,008
Currently under investigation footnote 10[10]	26,273

Hospitalizations - Ontario, January 15, 2020 to August 7, 2020

Hospitalizations	Number
Number of patients currently hospitalized with COVID-19 footnote 11[11]	53
Number of patients currently in ICU footnote 12[12]	27
Number of patients currently in ICU footnote 12[12] on a ventilator with COVID-19	12

Figure 2: Rate of confirmed cases of COVID-19 in public health reported week 31 (July 26 to August 1, 2020) by public health unit: Ontario

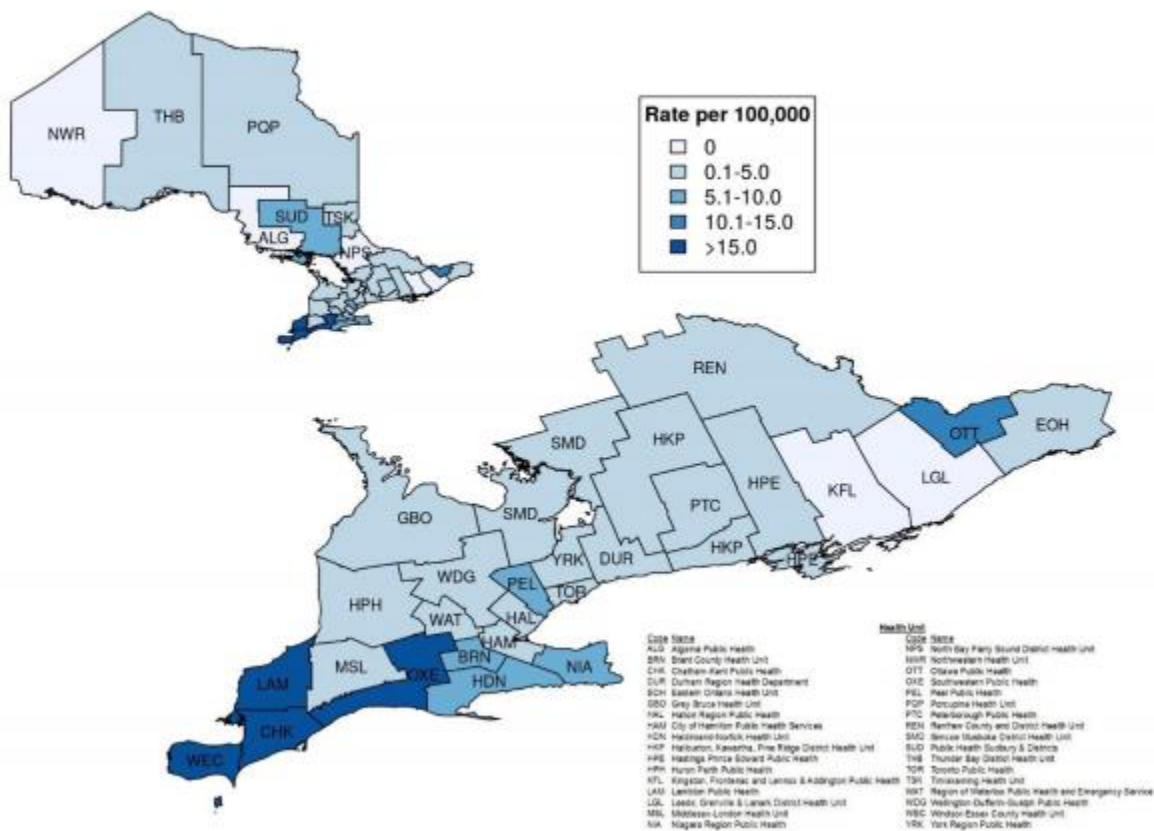
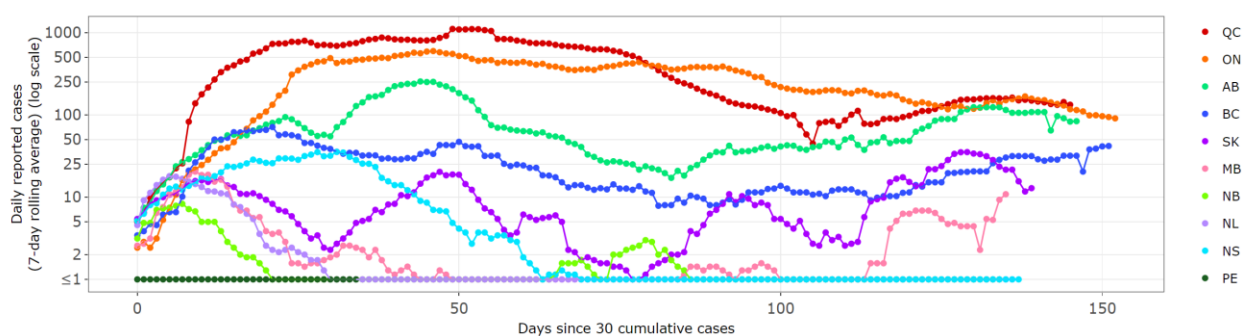


Figure 3: Daily cases by province (rolling average) [Last updated: August 7, 2020 21:00 EDT]

Interpretation: Graphs display trends for daily cases over time on a logarithmic scale.

- An upward slope means the number of cases/deaths reported each day is still growing.
- A flat line means the number of cases/deaths reported each day is staying the same.
- A downward slope means the number of cases/deaths reported each day is falling.



National case counts:

For information re: National counts, we recommend:

[COVID-19 Canadian Outbreak Tracker Esri Canada](https://www.esri.com/arcgis/storymaps/COVID-19-Canada) (Contains map and graphs re: cases)