

COVID-19 Situation Report for Health Care Providers, Saturday June 27, 2020

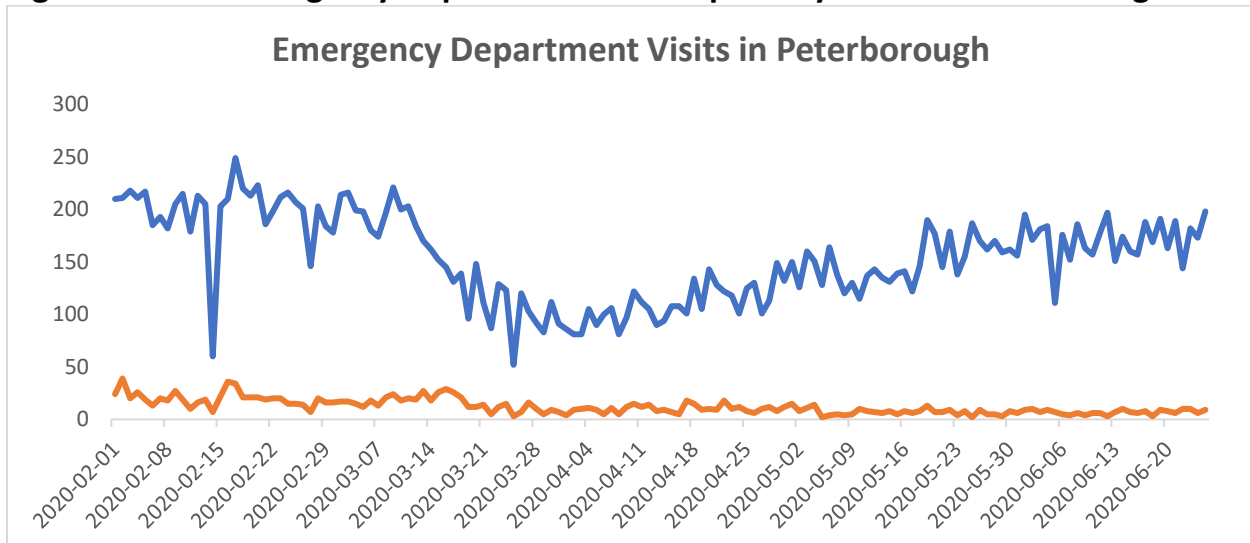
Cumulative local data for City and County of Peterborough, Hiawatha and Curve Lake First Nations

Confirmed positive ¹	95
Individuals tested ²	>16,050
Active cases	2
Resolved ^{1, 3}	91
Deceased ^{1, 4}	2

Current Local Institutional Outbreaks¹:

None

Figure 1: Total Emergency Department and Respiratory Visits in Peterborough⁵



Highlights of cases in Ontario

- There are a total of 34,476 confirmed cases of COVID-19 in Ontario reported to date.
 - Compared to the previous day, this represents:
 - An increase of 160 confirmed cases (percent change of 44.1%)
 - An increase of 8 deaths (percent change of 166.7%)
 - An increase of 178 resolved cases (percent change of -21.2%)

¹This data is retrieved daily from the Integrated Public Health Information System (iPHIS) at 4:00 pm, reported to the Ministry of Health and posted on our website at 4:30 pm. Please note that the provincial website is updated the following morning at 10:30 am. Depending on the time of day, these two reporting sources may or may not be aligned.

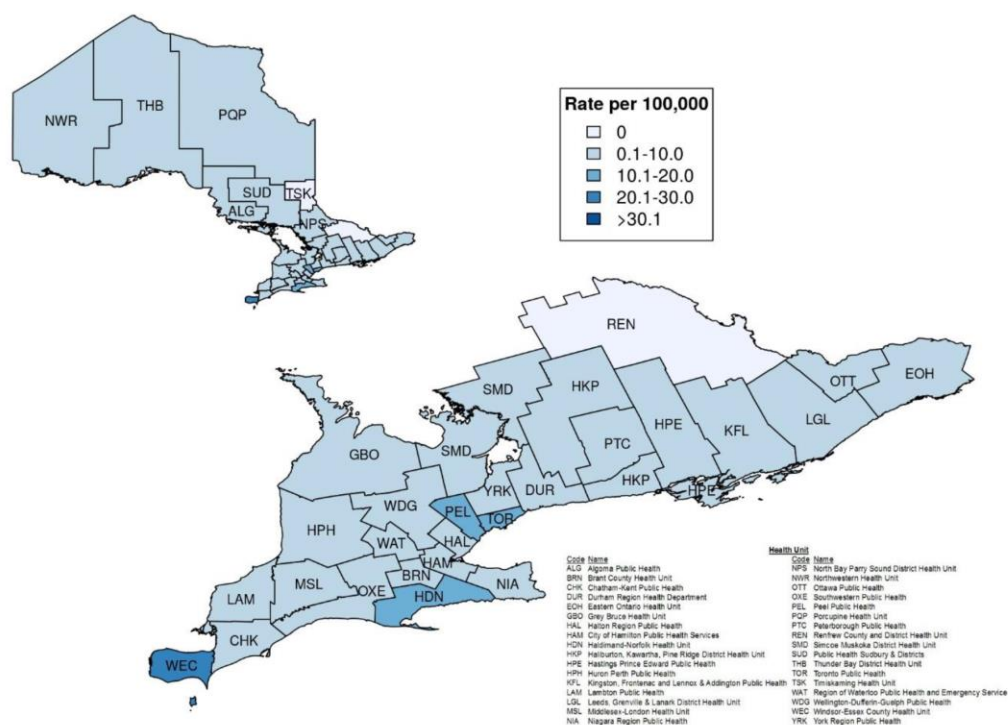
² This data is retrieved from the Ontario Laboratories Information System (OLIS) at 9:00 am and posted on our website by 5:00 pm. Please note that there is a lag of several days between when a COVID-19 test is done and when a record of it appears in OLIS.

³ Resolved includes: Fourteen days following symptom(s) onset provided the individual has no fever and symptoms have improved for individuals at home OR two negative test results (obtained at least 24 hours apart) for hospitalized.

⁴ Deaths indicate cases who tested positive where COVID-19 may or may not have been the cause of death.

⁵ Data retrieved from Acute Care Enhanced Surveillance Application (ACES) database.

Figure 2: Rate of confirmed cases of COVID-19 in public health reported week 25 (June 14 to 20, 2020) by public health unit: Ontario

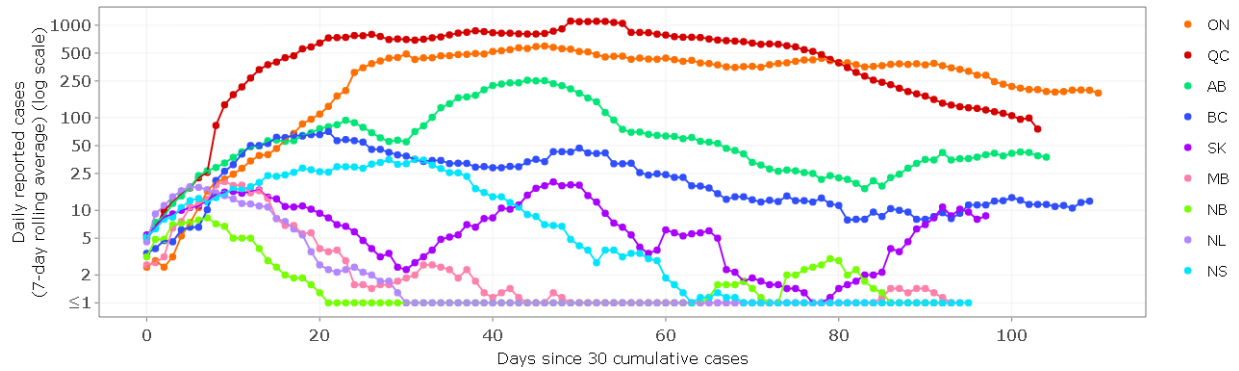


Summary of cases of COVID-19: Ontario, January 15, 2020 to June 26, 2020		
Severity	Number	Percentage
Number of cases ^{footnote 1[1]}	34,476	N/A
Change from previous report (new cases)	160	0.5% increase
Resolved ^{footnote 2[2]}	29,932	86.8
Change from previous report	178	0.6% increase
Subset of all cases that are reported to be long-term care residents ^{footnote 3[3] footnote 4[4] footnote 5[5]}	5,457	15.8
Subset of all cases that are reported as a health care worker ^{footnote 4[4] footnote 5[5] footnote 6[6]} associated with long-term care outbreaks	2,282	6.6
Total number of deaths ^{footnote 7[7]}	2,652	7.7
Deaths ^{footnote 7[7]} reported for residents in long-term care homes ^{footnote 4[4] footnote 5[5] footnote 6[6]}	1,698	64.0
Deaths ^{footnote 7[7]} reported for health care workers ^{footnote 5[5] footnote 6[6] footnote 2[2]} in long-term care homes	5	0.2
Demographics - Ontario, January 15, 2020 to June 26, 2020		
Case characteristics	Number	
Male	15,682	
Female	18,520	
19 and under	1,624	
20-39	9,875	
40-59	10,522	
60-79	6,611	
80 and over	5,834	
Testing - Ontario, January 15, 2020 to June 26, 2020		
Testing	Number	
Total tests completed ^{footnote 8[8]}	1,327,806	
Total tests completed in the previous day ^{footnote 9[9]}	33,492	
Currently under investigation ^{footnote 10[10]}	33,759	
Hospitalizations - Ontario, January 15, 2020 to June 26, 2020		
Hospitalizations	Number	
Number of patients currently hospitalized with COVID-19 ^{footnote 11[11]}	252	
Number of patients currently in ICU ^{footnote 12[12]}	54	
Number of patients currently in ICU ^{footnote 12[12]} on a ventilator with COVID-19	35	

Figure 3: Daily cases by province (rolling average) [Last updated: June 25, 2020 20:00 EDT]

Interpretation: Graphs display trends for daily cases over time on a logarithmic scale.

- An upward slope means the number of cases/deaths reported each day is still growing.
- A flat line means the number of cases/deaths reported each day is staying the same.
- A downward slope means the number of cases/deaths reported each day is falling.



National case counts:

For information re: National counts, we recommend:

[COVID-19 Canadian Outbreak Tracker Esri Canada](#) (Contains map and graphs re: cases)