

COVID-19 Situation Report for Health Care Providers, Thursday, April 30 2020

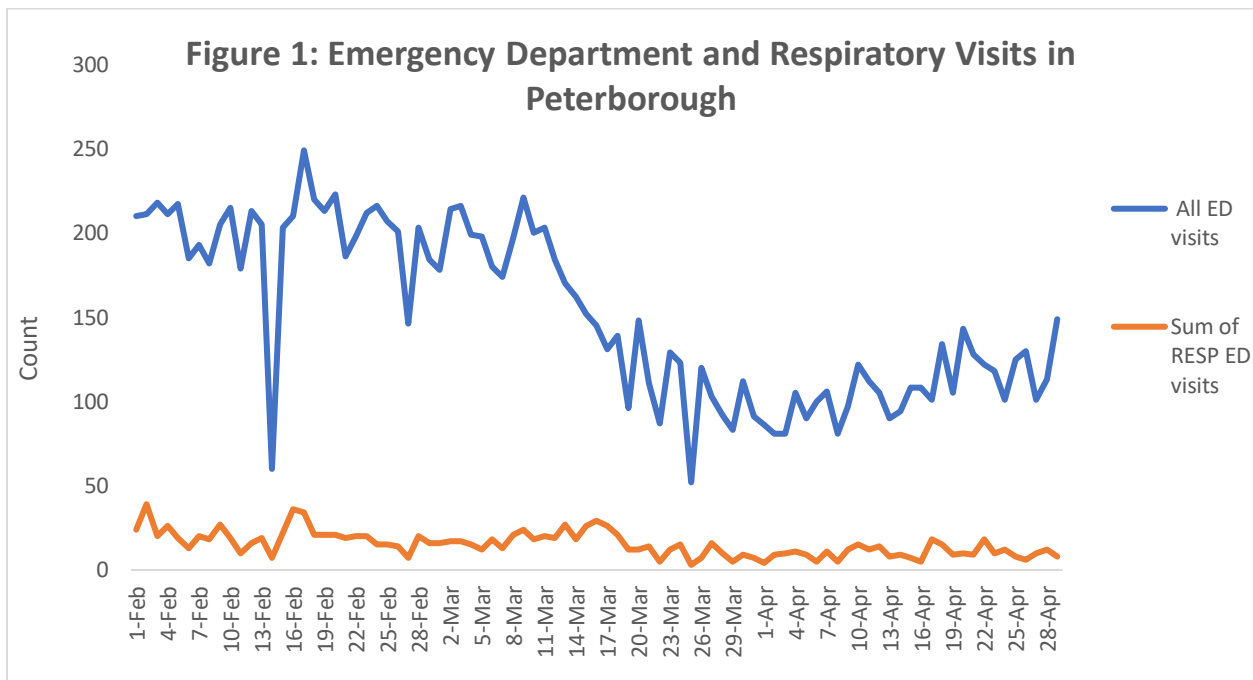
Cumulative local data for City and County of Peterborough, Hiawatha and Curve Lake First Nations

| | |
|---------------------------------------|-----------------|
| Confirmed positive ¹ | 86 |
| Confirmed negative ² | Results pending |
| Results pending ² | Results pending |
| Total individuals tested ² | Results pending |
| Resolved ^{1, 3} | 44 |
| Deceased ^{1, 4} | 3 |

Current Local Institutional Outbreaks¹:

Empress Gardens Retirement Residence
 Extendicare Lakefield
 Peterborough Retirement Residence
 St. John's Senior Centre
 St. Joseph's at Fleming

Figure 1: Total Emergency Department and Respiratory Visits in Peterborough⁵



¹ This data is retrieved daily from the Integrated Public Health Information System (iPHIS) at 4:00 pm, reported to the Ministry of Health and posted on our website at 4:30 pm. Please note that the provincial website is updated the following morning at 10:30 am. Depending on the time of day, these two reporting sources may or may not be aligned.

² This is an estimate based on the data reported to PPH.

³ Resolved includes: Fourteen days following symptom(s) onset provided the individual has no fever and symptoms have improved for individuals at home OR two negative test results (obtained at least 24 hours apart) for hospitalized and health care workers.

⁴ Deaths indicate cases who tested positive where COVID-19 may or may not have been the cause of death.

⁵ Data retrieved from Acute Care Enhanced Surveillance Application (ACES) database.

Status of cases in Ontario [Last updated: April 30, 2020 at 10:30 a.m. ET]

Summary of cases of COVID-19: Ontario, January 15, 2020 to April 29, 2020

| | Number | Percentage |
|--|---------|---------------|
| Number of cases ¹ | 16,187 | N/A |
| Change from previous report | 459 | 2.9% increase |
| Resolved ² | 10,205 | 63.0 |
| Deceased ³ | 1,082 | 6.3 |
| Demographics | | |
| Male | 6,754 | 41.7 |
| Female | 9,280 | 57.3 |
| 19 and under | 371 | 2.3 |
| 20-39 | 3,693 | 22.8 |
| 40-59 | 4,871 | 30.1 |
| 60-79 | 3,581 | 22.1 |
| 80 and over | 3,664 | 22.6 |
| Testing | | |
| Total tests completed ⁴ | 277,522 | N/A |
| Total tests completed in the previous day ⁵ | 12,928 | N/A |
| Currently under investigation ⁶ | 11,859 | N/A |
| Hospitalizations | | |
| Number of patients hospitalized with COVID-19 ⁷ | 999 | N/A |
| Number of patients in ICU ⁸ with COVID-19 | 233 | N/A |
| Number of patients in ICU ⁸ on a ventilator with COVID-19 | 181 | N/A |

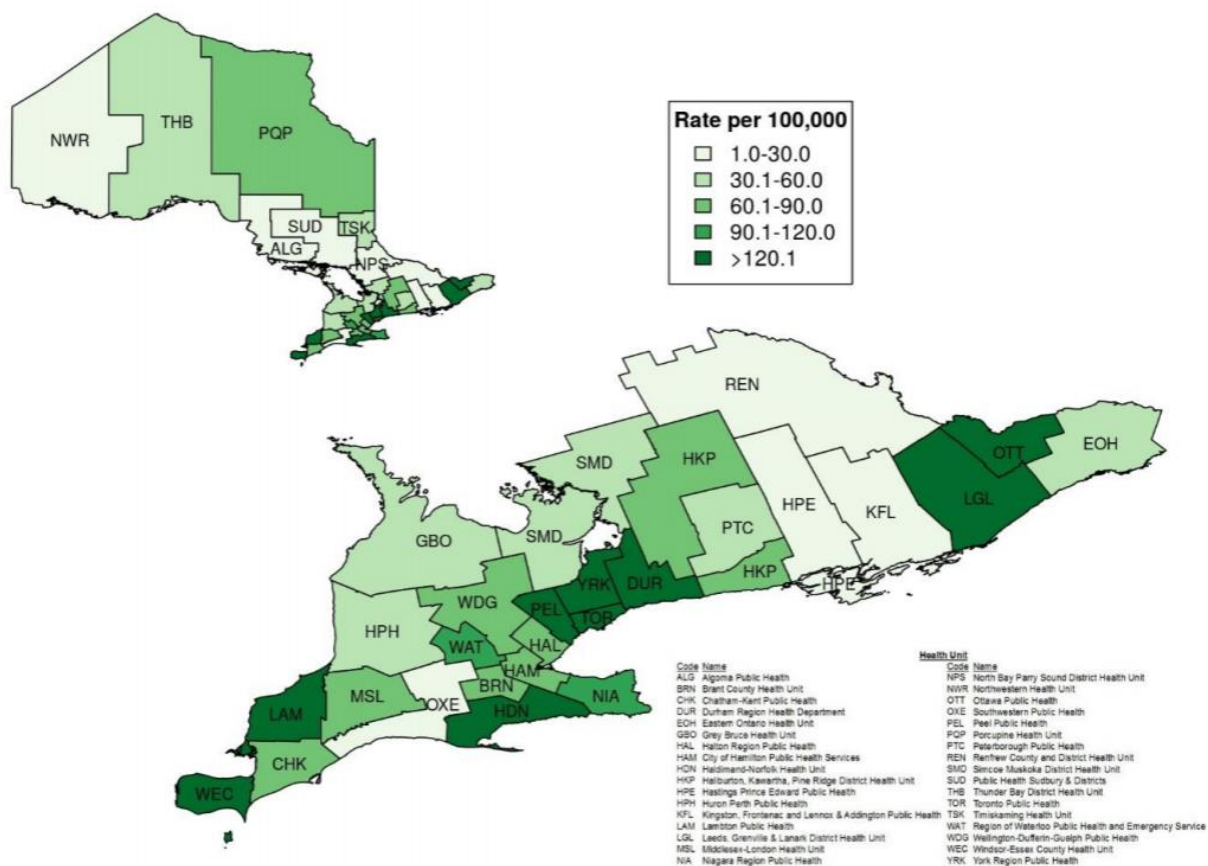
Long-Term Care [9](#), [10](#), [11](#), [12](#)

| | Ministry of Long-Term Care Daily Report | Public Health Ontario Daily Epidemiologic Summary (iPHIS) |
|-------------------------------------|--|---|
| Outbreaks in LTC Homes | 163 | 190 |
| Confirmed Cases for LTC Residents | 2614 | 2385 |
| Confirmed Cases for LTC Staff | 1430 | 1148 |
| Total confirmed LTC resident deaths | 835 | 530 |
| Total confirmed LTC staff deaths | <5 | <5 |

Highlights of cases in Ontario

- There are 16,187 confirmed cases of COVID-19 in Ontario reported to date. This represents an increase of 459 confirmed cases from the previous report.
 - 41.7% of cases are male, 57.3% are female.
 - 44.8% of cases are 60 years of age and older.
 - Greater Toronto Area public health units account for 59.5% of cases.
 - 11.6% of cases were hospitalized.
- 1,082 deaths have been reported (please note there may be a reporting delay for deaths in iPHIS). This is an increase of 86 deaths from the previous report.
- 190 outbreaks have been reported in long-term care homes. This is an increase of 9 outbreaks from the previous report.
- 530 deaths have been reported among residents/patients in long-term care homes. This is an increase of 9 deaths from the previous report.

Figure 2: Rate of confirmed cases of COVID-19 by public health unit: Ontario, January 15, 2020 to April 29, 2020

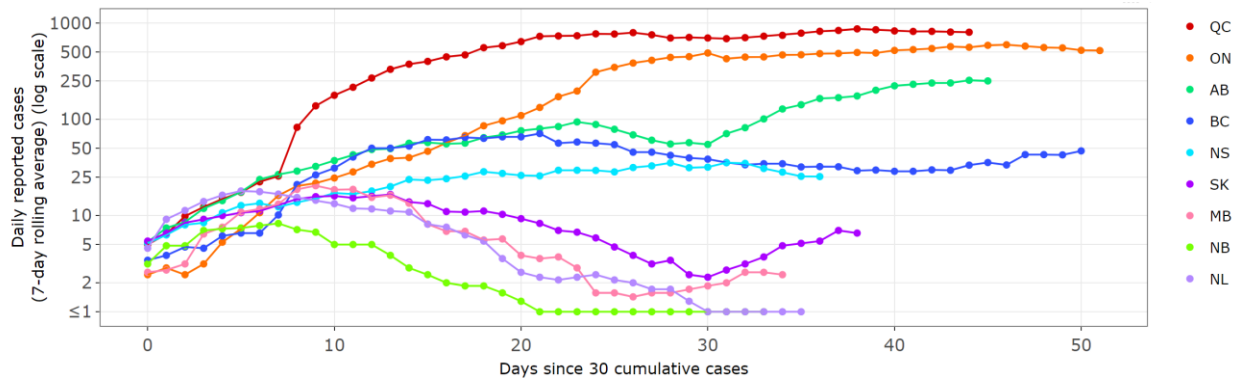


Data Source: integrated Public Health Information System (iPHIS) database

Figure 3: Daily cases by province (rolling average) [Last updated: April 29, 2020 20:00 EDT]

Interpretation: Graphs display trends for daily cases over time on a logarithmic scale.

- An upward slope means the number of cases/deaths reported each day is still growing.
- A flat line means the number of cases/deaths reported each day is staying the same.
- A downward slope means the number of cases/deaths reported each day is falling.



National case counts:

For information re: National counts, we recommend:

[COVID-19 Canadian Outbreak Tracker Esri Canada](#) (Contains map and graphs re: cases)