

COVID-19 Situation Report for Health Care Providers, Thursday, April 23 2020

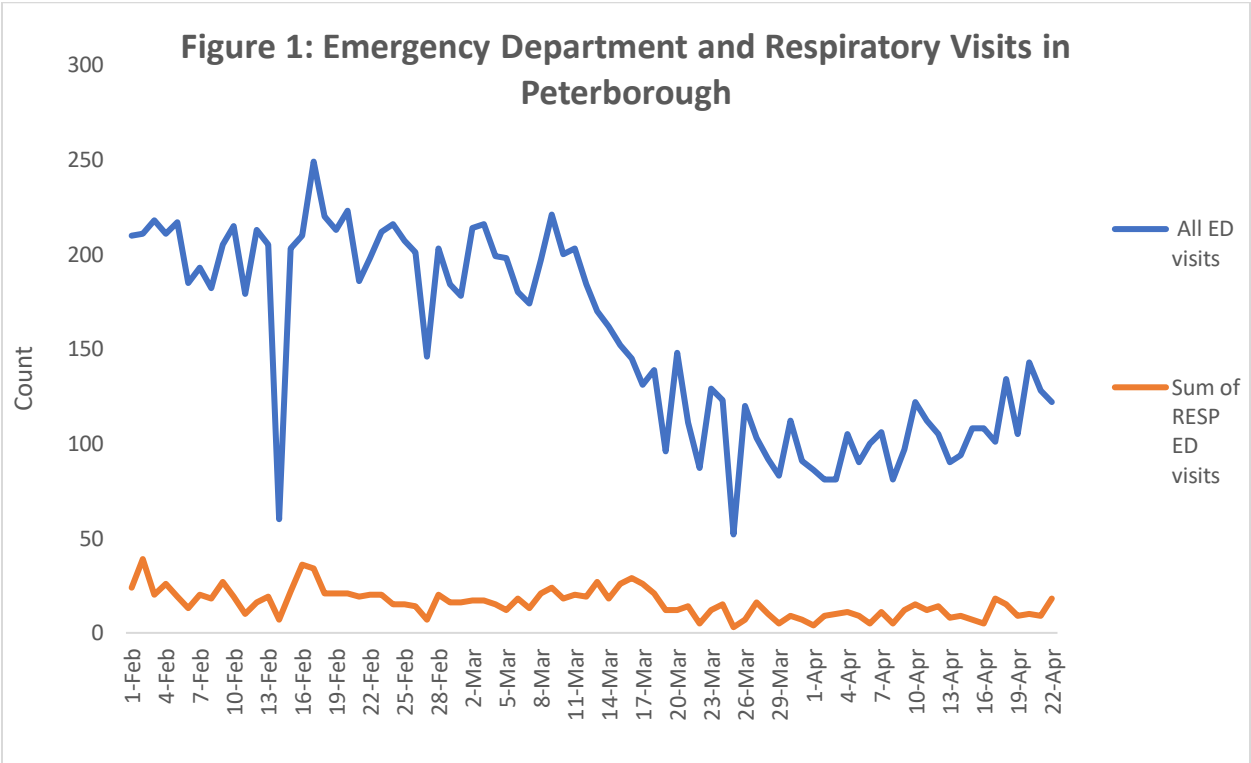
Cumulative local data for City and County of Peterborough, Hiawatha and Curve Lake First Nations

Confirmed positive ¹	60
Confirmed negative ²	1763
Results pending ²	429
Total individuals tested ²	2252
Resolved ^{1, 3}	38
Deceased ¹	1

Current Local Institutional Outbreaks¹:

St. John’s Centre
St. Joseph’s at Fleming

Figure 1: Total Emergency Department and Respiratory Visits in Peterborough⁴



¹ This data is retrieved daily from the Integrated Public Health Information System (iPHIS) at 4:00 pm, reported to the Ministry of Health and posted on our website at 4:30 pm. Please note that the provincial website is updated the following morning at 10:30 am. Depending on the time of day, these two reporting sources may or may not be aligned.

² This is an estimate based on the data reported to PPH.

³ Resolved includes: Fourteen days following symptom(s) onset provided the individual has no fever and symptoms have improved for individuals at home OR two negative test results (obtained at least 24 hours apart) for hospitalized and health care workers.

⁴ Data retrieved from Acute Care Enhanced Surveillance Application (ACES) database.

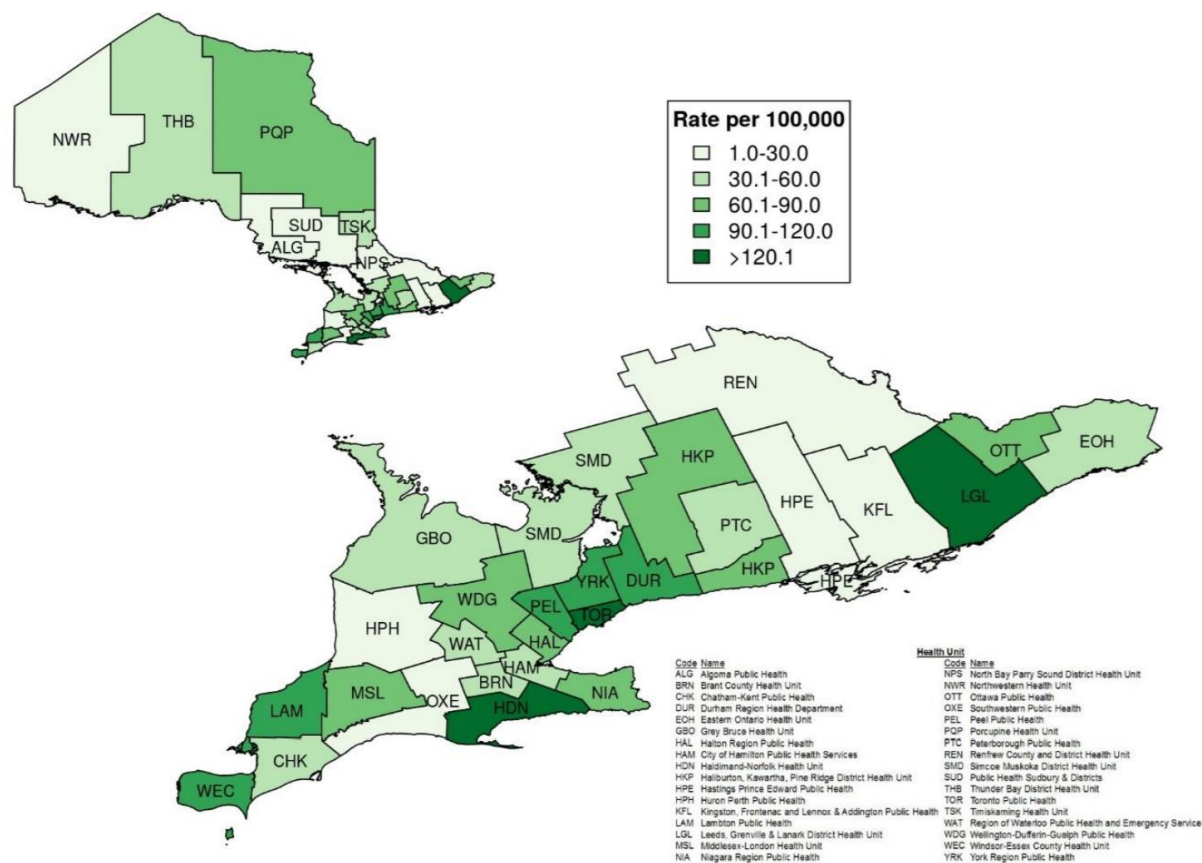
Highlights of cases in Ontario

- There are 12,879 confirmed cases of COVID-19 in Ontario reported to date in iPHIS. This represents an increase of 634 confirmed cases from the previous report.
 - 42.0% of cases are male, 57.0% are female.
 - 44.5% of cases are 60 years of age and older.
 - Greater Toronto Area public health units account for 59.6% of cases.
 - 11.7% of cases were hospitalized.
- 713 deaths have been reported (please note there may be a reporting delay for deaths in iPHIS). This is an increase of 54 deaths from the previous report.
- 135 outbreaks have been reported in long-term care homes. This is an increase of 10 outbreaks from the previous report.
- 358 deaths have been reported among residents/patients in long-term care homes. This is an increase of 63 deaths from the previous report.

Status of cases in Ontario [Last updated: April 23, 2020 at 10:30 a.m. ET]

Summary of cases of COVID-19: Ontario, January 15, 2020 to April 22, 2020		
	Number	Percentage
Number of cases ¹	12,879	N/A
Change from previous report	634	5.2% increase
Resolved ²	6,680	51.9
Deceased ³	713	5.5
Demographics		
Male	5,408	42.0
Female	7,342	57.0
19 and under	284	2.2
20-39	2,914	22.6
40-59	3,945	30.6
60-79	2,909	22.6
80 and over	2,816	21.9
Testing		
Total tests completed ⁴	194,745	N/A
Total tests completed in the previous day ⁵	10,214	N/A
Currently under investigation ⁶	6,757	N/A
Hospitalizations		
Number of patients hospitalized with COVID-19 ⁷	887	N/A
Number of patients in ICU ⁸ with COVID-19	233	N/A
Number of patients in ICU ⁸ on a ventilator with COVID-19	185	N/A

Figure 2: Rate of confirmed cases of COVID-19 by public health unit: Ontario, January 15, 2020 to April 22, 2020

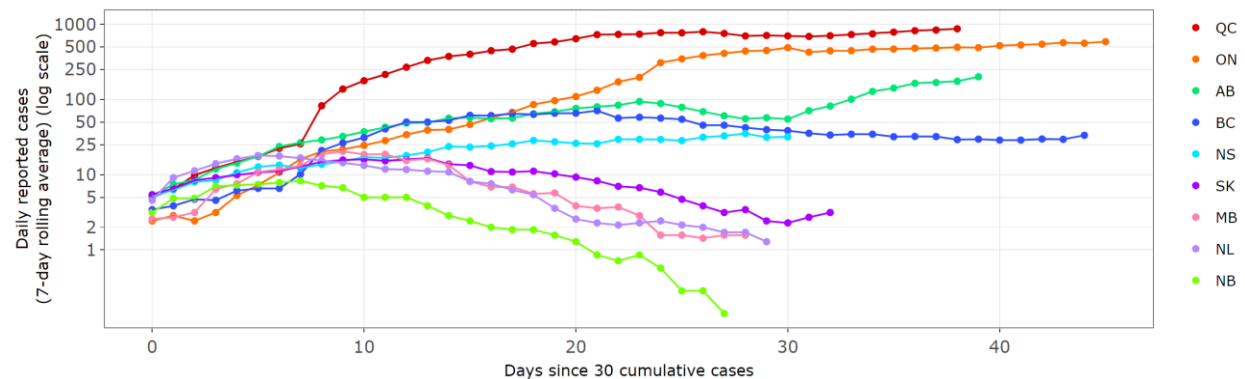


Data Source: integrated Public Health Information System (iPHIS) database

Figure 3: Daily cases by province (rolling average) [Last updated: April 20, 2020 20:00 EDT]

Interpretation: Graphs display trends for daily cases over time on a logarithmic scale.

- An upward slope means the number of cases/deaths reported each day is still growing.
- A flat line means the number of cases/deaths reported each day is staying the same.
- A downward slope means the number of cases/deaths reported each day is falling.



National case counts:

For information re: National counts, we recommend:
[COVID-19 Canadian Outbreak Tracker Esri Canada](#) (Contains map and graphs re: cases)