

## COVID-19 Situation Report for Health Care Providers, Tuesday, April 14, 2020

Cumulative local case counts for City and County of Peterborough, Hiawatha and Curve Lake First Nations<sup>1</sup>

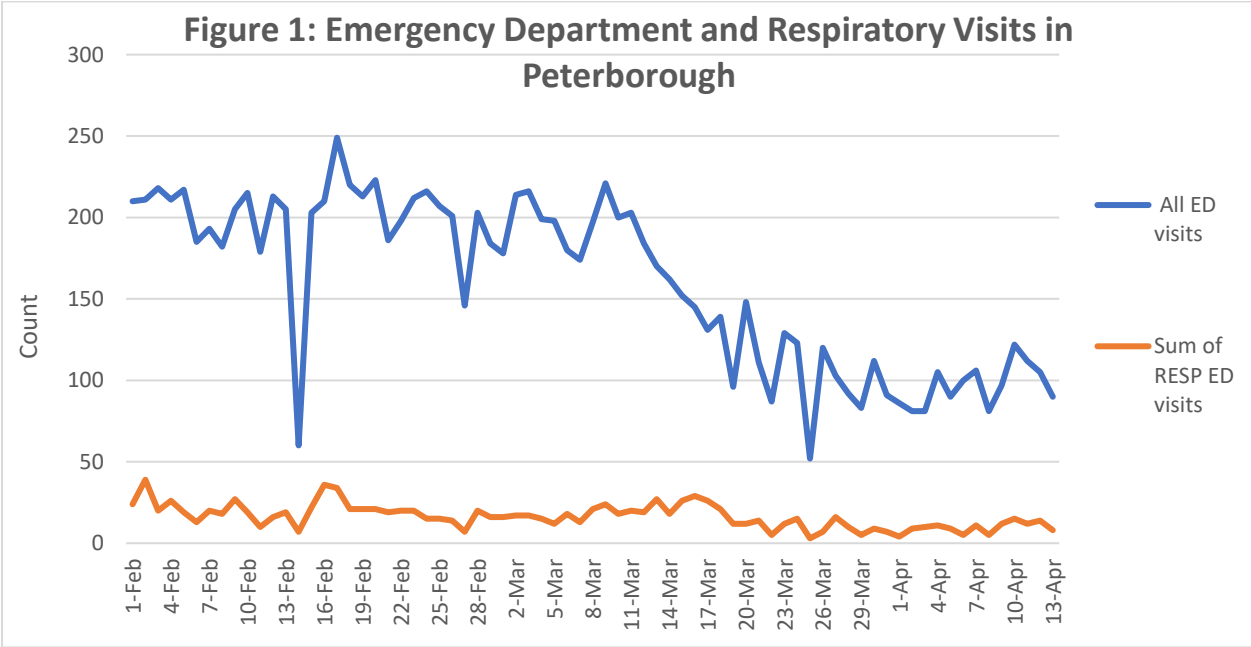
Confirmed positive	53
Confirmed negative	1133
Under investigation	207
<b>Total tested</b>	<b>1393</b>

Cumulative status of cases for City and County of Peterborough, Hiawatha and Curve Lake First Nations<sup>1</sup>

Resolved <sup>2</sup>	24
Deceased	1

**Local Institutional Outbreaks<sup>1</sup>:**  
 Peterborough Regional Health Centre  
 Riverview Manor  
 St. Joseph’s at Fleming

**Figure 1: Total Emergency Department and Respiratory Visits in Peterborough<sup>3</sup>**



<sup>1</sup> This data is retrieved daily from the Integrated Public Health Information System (iPHIS) at 4:00 pm, reported to the Ministry of Health and posted on our website at 4:30 pm. Please note that the provincial website is updated the following morning at 10:30 am. Depending on the time of day, these two reporting sources may or may not be aligned

<sup>2</sup> Resolved includes: Fourteen days following symptoms onset provided the individual is afebrile and symptoms have improved for individuals at home OR two negative test results (obtained at least 24 hours apart) for hospitalized and health care workers.

<sup>3</sup> Data retrieved from Acute Care Enhanced Surveillance Application (ACES) database

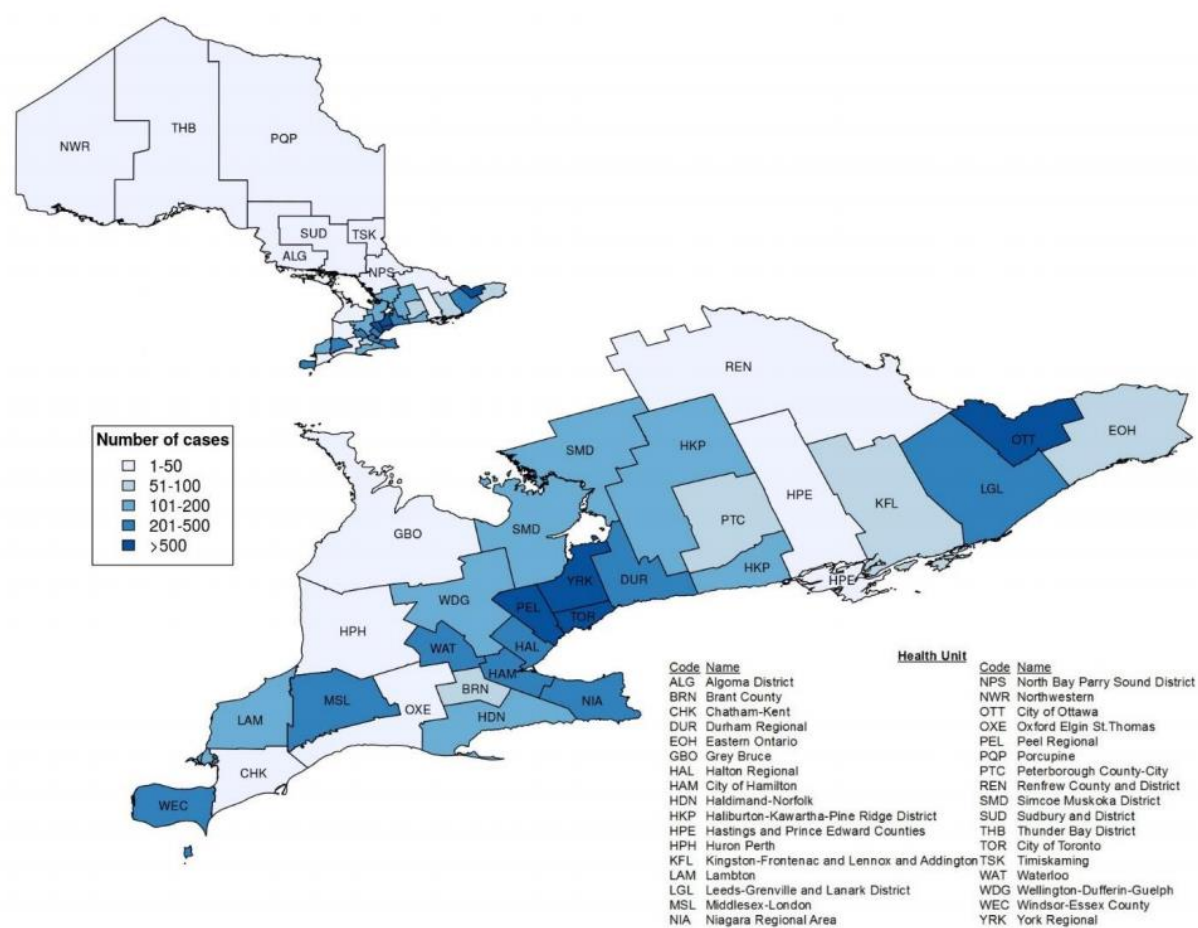
Highlights of cases in Ontario

- There are 7,953 confirmed cases of COVID-19 in Ontario reported to date in iPHIS. This
- represents an increase of 483 confirmed cases from the previous report.
  - 44.1% of cases are male, 55.2% are female.
  - 40.0% of cases are 60 years of age and older.
  - Greater Toronto Area public health units account for 54.4% of cases.
  - 12.5% of cases were hospitalized.
- 334 deaths have been reported (please note there may be a reporting delay for deaths in iPHIS). This is an increase of 43 deaths from the previous report.
- Ninety-three outbreaks have been reported in long-term care homes.

Status of cases in Ontario [Last updated: April 14, 2020 at 10:30 a.m. ET]

Summary of cases of COVID-19: Ontario, January 15, 2020 to April 13, 2020		
	Number	Percentage
Number of cases <sup>1</sup>	7,953	N/A
Change from previous report	483	6.5% increase
Resolved <sup>2</sup>	3,568	44.9
Deceased <sup>3</sup>	334	4.2
Demographics		
Male	3,511	44.1
Female	4,393	55.2
19 and under	182	2.3
20-39	1,912	24.0
40-59	2,676	33.6
60-79	1,890	23.8
80 and over	1,287	16.2
Testing		
Total Tested <sup>4</sup>	113,082	N/A
Currently Under Investigation <sup>5</sup>	2,107	N/A
Hospitalizations		
Number of patients hospitalized with COVID-19 <sup>6</sup>	769	N/A
Number of patients in ICU <sup>7</sup> with COVID-19	255	N/A
Number of patients in ICU <sup>7</sup> on a ventilator with COVID-19	199	N/A

Figure 2: Confirmed cases (n=7,953\*) of COVID-19 by public health unit: Ontario, January 15, 2020 to April 13, 2020

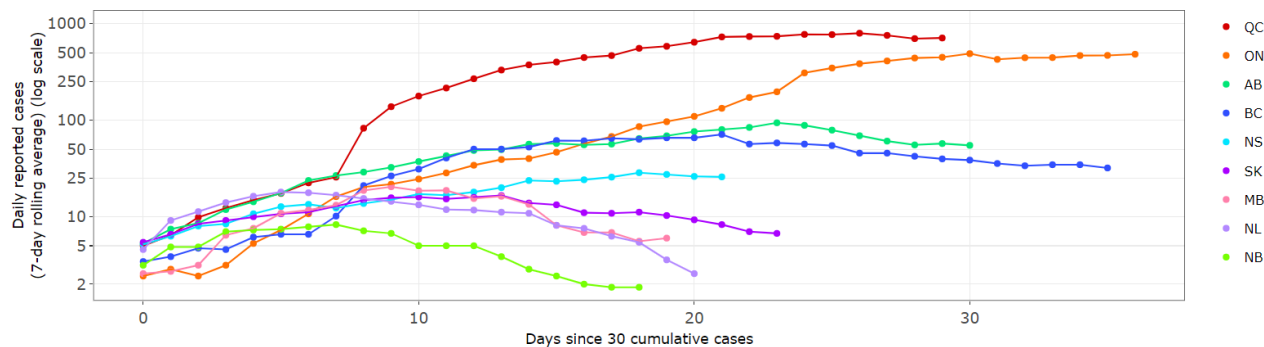


Data Source: integrated Public Health Information System (iPHIS) database

Figure 3: Daily cases by province (rolling average) [Last updated: April 13, 2020 19:00 EDT]

Interpretation: Graphs display trends for daily cases over time on a logarithmic scale.

- An upward slope means the number of cases/deaths reported each day is still growing.
- A flat line means the number of cases/deaths reported each day is staying the same.
- A downward slope means the number of cases/deaths reported each day is falling.



**National case counts:**

For information re: National counts, we recommend:

[COVID-19 Canadian Outbreak Tracker Esri Canada](#) (Contains map and graphs re: cases)