

Opioid-Related Harms Status Report

THIRD Quarter
Published November, 2020



This report highlights opioid-related harms in the area served by Peterborough Public Health (PPH), including **Curve Lake** and **Hiawatha First Nations**, and the **City** and **County of Peterborough**.

Paramedic Services¹

From July 1 to September 30, 2020, **73 suspected opioid-related overdose calls** were received by Peterborough Paramedic Services.



78% of calls involved **men**



63% of calls involved the **24-45 year old age group**

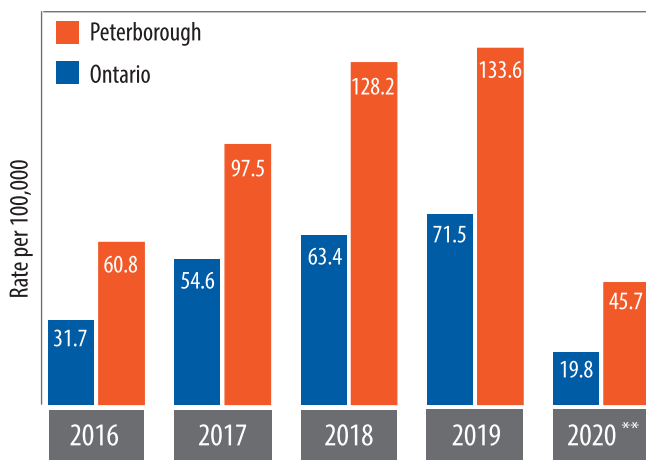


29% of calls occurred between **4:00 p.m. & 12:00 a.m.**

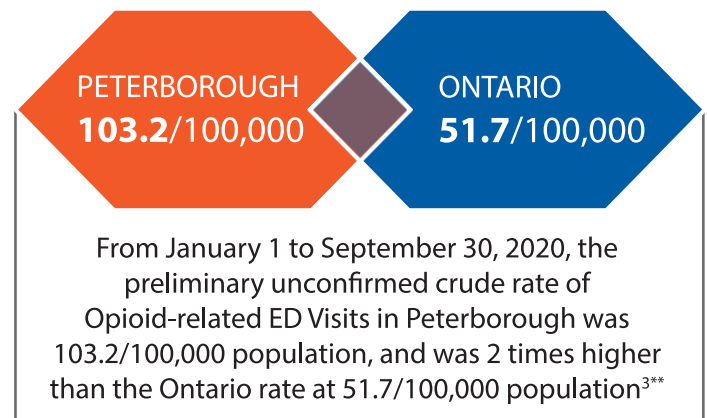
For reference, 49 and 54 opioid-related calls were received in the previous 2 quarters (January-March and April-June 2020 respectively) and 60 calls were received in the same quarter last year (July-September 2019).

Emergency Department (ED)

Rate of **CONFIRMED** opioid-related ED visits (by year) PPH and Ontario, 2016-2020*

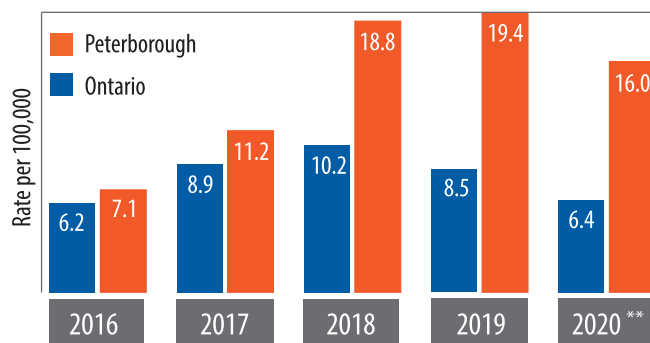


Rate of **Preliminary UNCONFIRMED** opioid-related ED visits (by year), PPH and Ontario, January-June 2020



Deaths

Rate of **CONFIRMED** opioid-related deaths (by year) PPH and Ontario, 2016-2020^{2*}



Number of local opioid-related deaths, 2016-2020²

YEAR	NUMBER
2016	10
2017	16
2018	27
2019**	29
2020 (Jan-June)**	23

Of the 2019^{4} opioid-related deaths**

Ontario 92.8% | **Peterborough 92.9%**
of total were **accidental**

Ontario 88% | **Peterborough 82.1%**
of total occurred among the **25-64 year old age group**

***Limitations**

- Only a fraction of opioid overdoses would end up in an emergency department visit and hence may not reflect the total burden in the population.
- Data for Ontario residents who visit an ED/hospital or die outside of the province are not included.

****Notes**

- 2019 and 2020 ED visits and death data should be considered preliminary and subject to change.
- Only partial data are available for 2020 opioid-related deaths (January-June 2020) and should be considered preliminary and are subject to change as remaining cases are closed by the Office of the Chief Coroner of Ontario. These data do not include probable cases which are still under investigation to determine cause of death.
- Generally, ED visits and deaths are included in the calculations based on the listed place of residence that fall within the jurisdiction of Peterborough Public Health.
- Data for 2020 accidental opioid-related deaths has not yet been made available.

References

¹Data Source: Peterborough County-City Paramedics

²Data Source: Ontario Agency for Health Protection and Promotion (Public Health Ontario). Interactive Opioid Tool. Toronto, ON: Queen's Printer for Ontario; 2019. Available from:

<https://www.publichealthontario.ca/en/data-and-analysis/substance-use/interactive-opioid-tool>

³Data Source: National Ambulatory Care Reporting System (NACRS), Canadian Institute for Health (CIHI)

⁴Data Source: Coroner's Opioid Investigative Aid, May 2017 to June 2020, Office of the Chief Coroner for Ontario, extracted November 5, 2020.