

COVID-19 Situation Report for Health Care Providers, Thursday, September 24, 2020

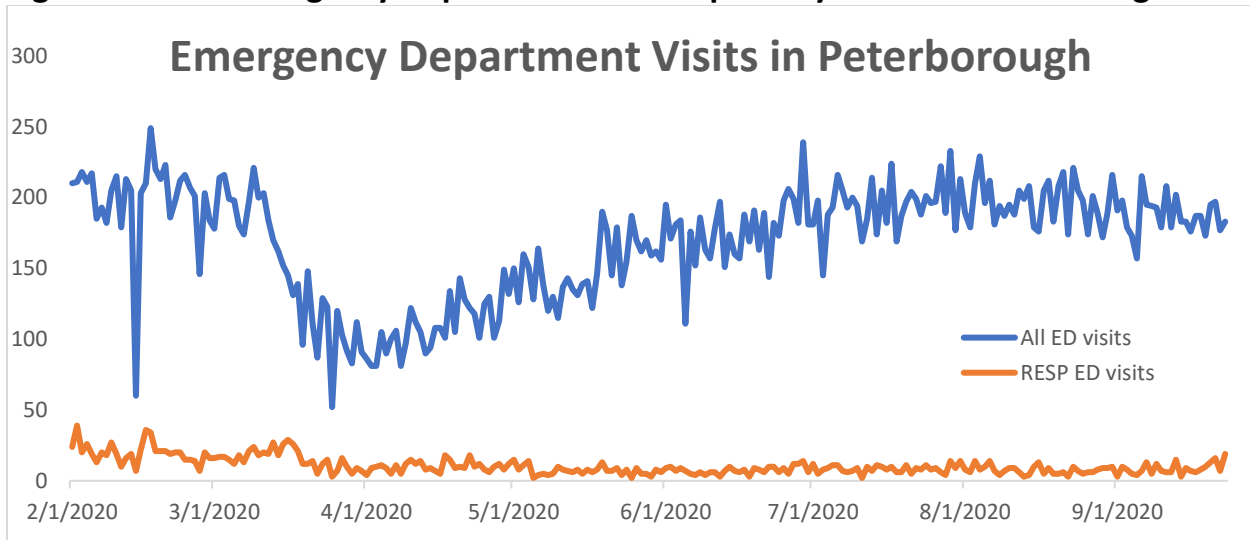
Cumulative local data for City and County of Peterborough, Hiawatha and Curve Lake First Nations

Confirmed positive ¹	116
Individuals tested ²	>28,000
Active cases	9
Resolved ^{1,3}	105
Deceased ^{1,4}	2
Date last case reported	September 24, 2020

Current Local Institutional Outbreaks¹:

Fairhaven Home

Figure 1: Total Emergency Department and Respiratory Visits in Peterborough⁵



Highlights of cases in Ontario

- There are a total of 48,496 confirmed cases of COVID-19 in Ontario reported to date.
- Compared to the previous day, this represents:
 - An increase of 409 confirmed cases (percent change of 22.1%)
 - An increase of 1 deaths (percent change of -66.7%)
 - An increase of 286 resolved cases (percent change of 10.9%)

¹This data is retrieved daily from Ontario's integrated Public Health Information System (iPHIS) and Case and Contact Management system (CCM) at 4:00 pm, and posted on our website by 5 pm. Please note that the provincial website is updated the following morning at 10:30 am. Depending on the time of day, these two reporting sources may or may not be aligned.

² This data is retrieved from the Ontario Laboratories Information System (OLIS) at 9:00 am and posted on our website by 5 pm. Please note that there is a lag of several days between when a COVID-19 test is done and when a record of it appears in OLIS.

³ Resolved includes: Fourteen days following symptom(s) onset provided the individual has no fever and symptoms have improved for individuals at home OR two negative test results (obtained at least 24 hours apart) for hospitalized.

⁴ Deaths indicate cases who tested positive where COVID-19 may or may not have been the cause of death.

⁵ Data retrieved from Acute Care Enhanced Surveillance Application (ACES) database.

Summary of cases of COVID-19: Ontario, January 15, 2020 to September 23, 2020

Severity	Number	Percentage
Number of cases footnote 1[1]	48,496	N/A
Change from previous report (new cases)	409	0.9% increase
Resolved footnote 2[2]	41,886	86.4
Change from previous report	286	0.7% increase
Subset of all cases that are reported to be long-term care residents footnote 3[3] footnote 4[4] footnote 5[5]	6,043	12.5
Subset of all cases that are reported as a health care worker footnote 4[4] footnote 5[5] footnote 6[6] associated with long-term care outbreaks	2,690	5.5
Total number of deaths footnote 7[7]	2,836	5.8
Deaths footnote 7[7] reported for residents in long-term care homes footnote 4[4] footnote 5[5] footnote 6[6]	1,829	64.5
Deaths footnote 7[7] reported for health care workers footnote 5[5] footnote 6[6] footnote 2[2] in long-term care homes	8	0.3

Demographics - Ontario, January 15, 2020 to September 23, 2020

Case characteristics	Number
Male	22,910
Female	25,227
19 and under	3,789
20-39	16,339
40-59	13,991
60-79	8,138
80 and over	6,228

Testing - Ontario, January 15, 2020 to September 23, 2020

Testing	Number
Total tests completed footnote 8[8]	3,680,614
Total tests completed in the previous day footnote 9[9]	30,634
Please note that due to PHO's LIS downtime, yesterday's tests completed value is incomplete – missed volumes will be included in tomorrow's report.	
Currently under investigation footnote 10[10]	53,840

Hospitalizations - Ontario, January 15, 2020 to September 23, 2020

Hospitalizations	Number
Number of patients currently hospitalized with COVID-19 footnote 11[11]	88
Number of patients currently in ICU footnote 12[12]	27
Number of patients currently in ICU footnote 12[12] on a ventilator with COVID-19	11

Figure 2. Rate of confirmed cases of COVID-19 in public health reported week 38 (September 13 to 19, 2020) by public health unit: Ontario

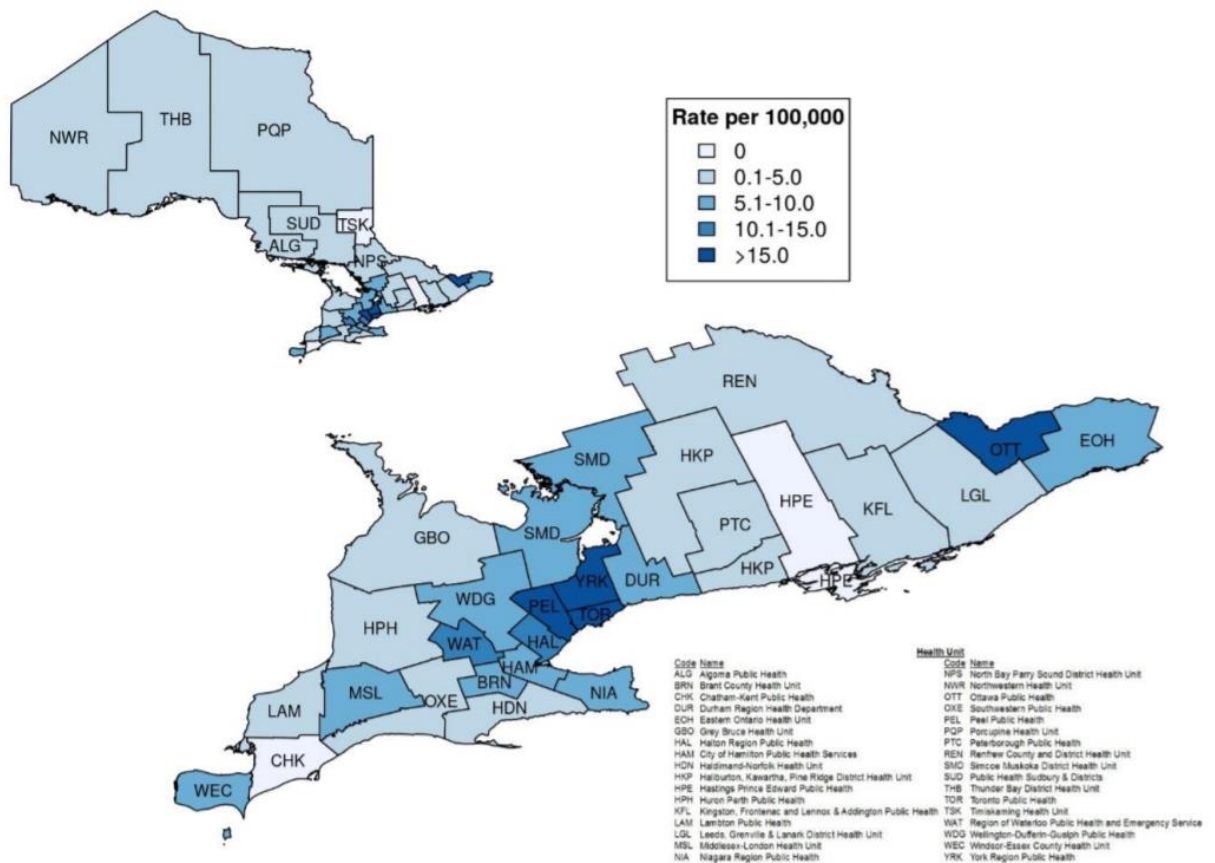
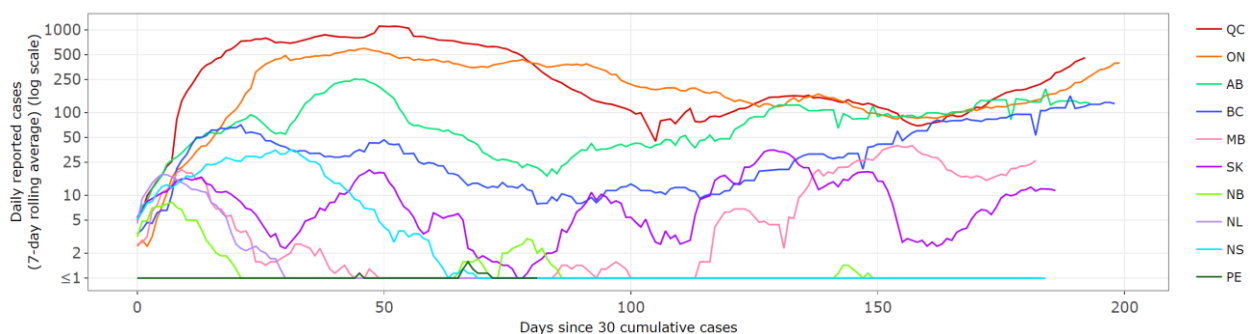


Figure 3: Daily cases by province (rolling average) [Last updated: September 23, 2020 19 EDT]

Interpretation: Graphs display trends for daily cases over time on a logarithmic scale.

- An upward slope means the number of cases/deaths reported each day is still growing.
- A flat line means the number of cases/deaths reported each day is staying the same.
- A downward slope means the number of cases/deaths reported each day is falling.



National case counts:

For information re: National counts, we recommend:

[COVID-19 Canadian Outbreak Tracker Esri Canada](https://www.esri.com/arcgis/resources/articles/2020/09/23/covid-19-canadian-outbreak-tracker-esri-canada) (Contains map and graphs re: cases)