

COVID-19 Situation Report for Health Care Providers, Wednesday July 1, 2020

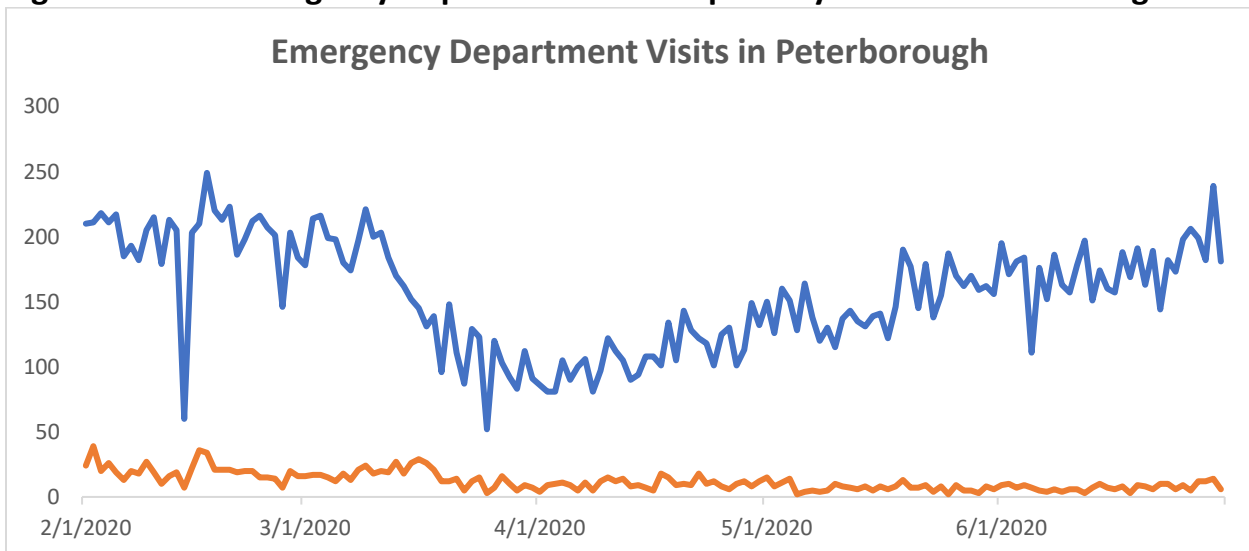
Cumulative local data for City and County of Peterborough, Hiawatha and Curve Lake First Nations

| | |
|---------------------------------|---------|
| Confirmed positive ¹ | 95 |
| Individuals tested ² | >16,900 |
| Active cases | 2 |
| Resolved ^{1,3} | 91 |
| Deceased ^{1,4} | 2 |

Current Local Institutional Outbreaks¹:

None

Figure 1: Total Emergency Department and Respiratory Visits in Peterborough⁵



Highlights of cases in Ontario

- There are a total of 35,068 confirmed cases of COVID-19 in Ontario reported to date.
- Compared to the previous day, this represents:
 - An increase of 157 confirmed cases (percent change of -38.9%)
 - An increase of 7 deaths (percent change of 0.0%)
 - An increase of 148 resolved cases (percent change of 66.3%)

¹This data is retrieved daily from the Integrated Public Health Information System (iPHIS) at 4:00 pm, reported to the Ministry of Health and posted on our website at 4:30 pm. Please note that the provincial website is updated the following morning at 10:30 am. Depending on the time of day, these two reporting sources may or may not be aligned.

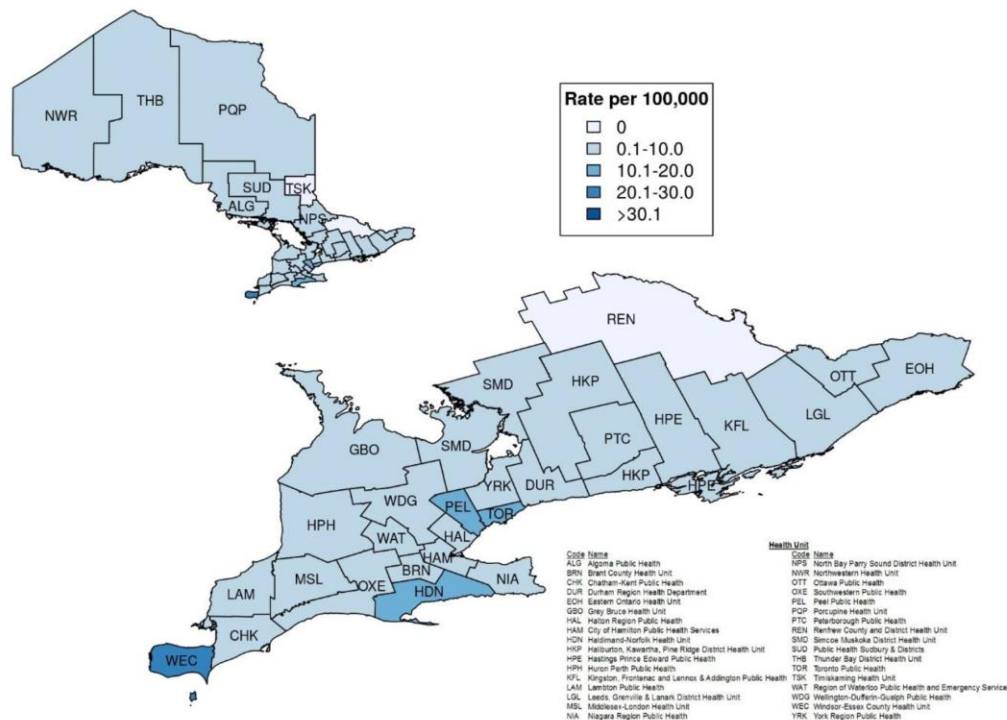
² This data is retrieved from the Ontario Laboratories Information System (OLIS) at 9:00 am and posted on our website by 5:00 pm. Please note that there is a lag of several days between when a COVID-19 test is done and when a record of it appears in OLIS.

³ Resolved includes: Fourteen days following symptom(s) onset provided the individual has no fever and symptoms have improved for individuals at home OR two negative test results (obtained at least 24 hours apart) for hospitalized.

⁴ Deaths indicate cases who tested positive where COVID-19 may or may not have been the cause of death.

⁵ Data retrieved from Acute Care Enhanced Surveillance Application (ACES) database.

Figure 2: Rate of confirmed cases of COVID-19 in public health reported week 25 (June 14 to 20, 2020) by public health unit: Ontario

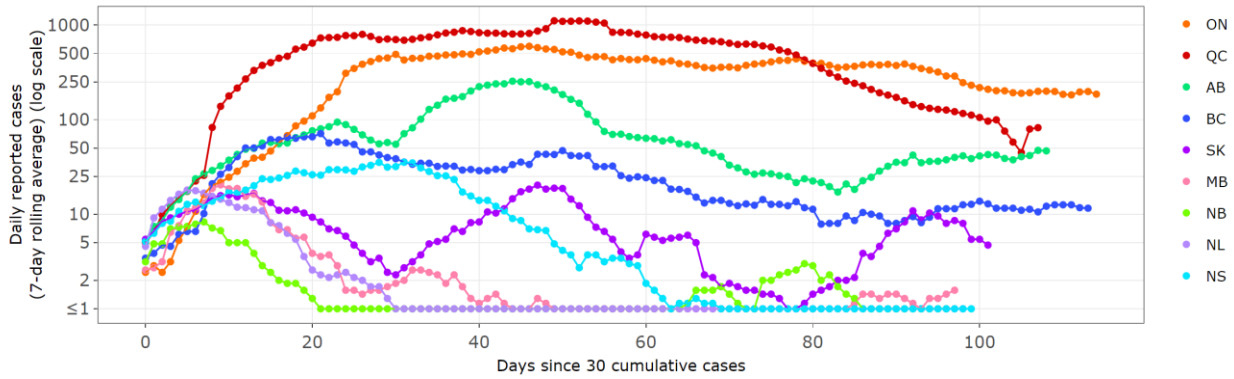


| Summary of cases of COVID-19: Ontario, January 15, 2020 to June 29, 2020 | | |
|--|-----------|---------------|
| Severity | Number | Percentage |
| Number of cases footnote 1[1] | 35,068 | N/A |
| Change from previous report (new cases) | 157 | 0.4% increase |
| Resolved footnote 2[2] | 30,344 | 86.5 |
| Change from previous report | 148 | 0.5% increase |
| Subset of all cases that are reported to be long-term care residents footnote 3[3] footnote 4[4] footnote 5[5] | 5,473 | 15.6 |
| Subset of all cases that are reported as a health care worker footnote 4[4] footnote 5[5] footnote 6[6] associated with long-term care outbreaks | 2,284 | 6.5 |
| Total number of deaths footnote 7[7] | 2,672 | 7.6 |
| Deaths footnote 7[7] reported for residents in long-term care homes footnote 4[4] footnote 5[5] footnote 6[6] | 1,710 | 64.0 |
| Deaths footnote 7[7] reported for health care workers footnote 5[5] footnote 6[6] footnote 2[2] in long-term care homes | 5 | 0.2 |
| Demographics - Ontario, January 15, 2020 to June 29, 2020 | | |
| Case characteristics | Number | |
| Male | 16,053 | |
| Female | 18,739 | |
| 19 and under | 1,682 | |
| 20-39 | 10,213 | |
| 40-59 | 10,646 | |
| 60-79 | 6,657 | |
| 80 and over | 5,861 | |
| Testing - Ontario, January 15, 2020 to June 29, 2020 | | |
| Testing | Number | |
| Total tests completed footnote 8[8] | 1,407,325 | |
| Total tests completed in the previous day footnote 9[9] | 23,759 | |
| Currently under investigation footnote 10[10] | 19,318 | |
| Hospitalizations - Ontario, January 15, 2020 to June 29, 2020 | | |
| Hospitalizations | Number | |
| Number of patients currently hospitalized with COVID-19 footnote 11[11] | 213 | |
| Number of patients currently in ICU footnote 12[12] | 42 | |
| Number of patients currently in ICU footnote 12[12] on a ventilator with COVID-19 | 34 | |

Figure 3: Daily cases by province (rolling average) [Last updated: June 30, 2020 19:00 EDT]

Interpretation: Graphs display trends for daily cases over time on a logarithmic scale.

- An upward slope means the number of cases/deaths reported each day is still growing.
- A flat line means the number of cases/deaths reported each day is staying the same.
- A downward slope means the number of cases/deaths reported each day is falling.



National case counts:

For information re: National counts, we recommend:

[COVID-19 Canadian Outbreak Tracker Esri Canada](#) (Contains map and graphs re: cases)