

**Did you know?**

## Hepatitis B vaccine is publicly funded in Ontario for the following patients:

1. Infants born to HBV-positive carrier mothers.
2. Household and sexual contacts of chronic carriers and acute cases.
3. Persons on renal dialysis and those with diseases requiring frequent receipt of blood products (eg. haemophilia) 2nd and 3rd doses only.
4. Persons awaiting liver transplants (2nd and 3rd dose only)
5. Injection Drug users.
6. Men who have sex with men, individuals with multiple sex partners, history of a sexually transmitted infection.
7. Those who have a needle stick injury in a non-healthcare setting.
8. Children < 7 years old whose families have immigrated from countries of high prevalence for hepatitis B, and who may be exposed to hepatitis B carriers through their extended families.
9. Persons with chronic liver disease including hepatitis C.

For more information, call:  
Vaccine Preventable Disease Program  
705-743-1000, ext. 139



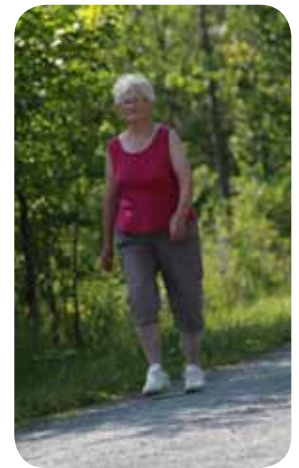
## A Falls Prevention Survey for Healthcare Providers: A Partners In Aging Well (PIAW) Initiative.

The PIAW is excited to finally launch their falls prevention initiative. This survey is geared toward healthcare providers who work with older adults over 65 years of age.

This survey will collect valuable information that will be used to develop an action plan to provide support and resources to enhance falls prevention activities in your practice.

Your participation is important to ensure the findings are accurate. The survey is anonymous and confidential.

Look for your survey in the mail or please visit:  
<http://fluidsurveys.com/s/Falls-Prevention-HCP/>



For more information contact:  
Nicole Fraser, Health Promoter  
Peterborough County-City Health Unit,  
Chair, Partners In Aging Well  
at 705-743-1000, ext. 354.

### In this issue...

- Contact with Amphibians, Reptiles and Feeder Rodents Can Cause Salmonella
- The Possible Dangers in Renovating Old Buildings
- Do Your Part to [Monitor Adverse Events!](#)

## Contact with Amphibians, Reptiles and Feeder Rodents Can Cause Salmonella

Amphibians (frogs, newts and salamanders), reptiles (snakes, turtles, bearded dragons and lizards) and rodents (mice and rats fed to the reptiles) often carry Salmonella germs without showing any signs of illness. They may shed Salmonella in their droppings. These can contaminate their bodies and the environment



around them, including where they are housed or handled. The symptoms of Salmonella may include diarrhea, vomiting, stomach cramps, headaches and fever. The sickness can range from mild to severe or even life threatening. Children younger than 5 years of age, elderly individuals, pregnant women and people with weak immune systems are at higher risk of getting sick with Salmonella.

If you have patients who have amphibians, reptiles and feeder rodents, advise them to:

- thoroughly wash hands with soap and hot water immediately after handling any amphibian, reptile or feeder rodent, or anything in the area where they live or were handled
- ensure that parents supervise hand washing for young children
- thaw frozen feeder rodents in a dedicated container, using dedicated utensils away from common areas such as your kitchen or bathroom
- clean and disinfect any surfaces where feeder rodents were prepared, thawed or stored
- dispose of amphibian and reptile waste water and droppings in the toilet or in a dedicated trash can away from food preparation areas
- avoid keeping amphibians and reptiles in households with children younger than 5 years of age, elderly individuals, pregnant women or people with weak immune systems
- avoid keeping amphibians and reptiles in rooms where people's food is prepared or eaten
- avoid bathing animals or clean their habitats in a kitchen sink, bathroom sink or bathtub (bath them in a small plastic tub or bin that is dedicated for animal use only. This will prevent cross contamination.)
- avoid kissing the reptile or amphibian
- avoid letting amphibians and reptiles roam freely in the home
- avoid allowing frozen feeder rodents to come in contact with food for human consumption (they should be kept in a sealed container in a separate freezer or a separate section of your freezer)
- avoid thawing frozen feeder rodents in microwaves used for human food

For more information, contact Public Health Inspectors Simon Lee or Ravi Shahe at 705-743-1000.

## The Possible Dangers in Renovating Old Buildings

Renovating older homes can result in a little known health hazard called histoplasmosis. In 2013, more than a dozen



people in Quebec became ill with a pneumonia-like infection after removing the exterior brick of a century-old house.

Fourteen people -- including workers, residents of the house and neighbours -- developed symptoms of histoplasmosis, a fungal disease carried in the droppings of bats and birds. Two of the workers were admitted to hospital and the regional public health department was contacted to investigate the outbreak.

The investigation determined that 30 people were exposed to the spore-laden dust. Fourteen of the exposed people developed symptoms of histoplasmosis infection, including a high fever, coughing, chest pain, and shortness of breath. Those affected included six masonry workers, the 2 homeowners, a visitor to the house, 2 neighbours whose bedroom faced the demolition site, and 3 debris sorters.

While the fungus is widely present in soil, cases of histoplasmosis infection are rare in Canada. We don't know the number of histoplasmosis cases for Peterborough, because it is not reportable to public health. Cases usually involve construction work that stirs up clouds of dried-up aerosolized spores that people inhale. That's why workers and their employers need to strictly adhere to labour regulations which require protective masks or respirators be worn while doing jobs that produce potentially harmful, breathable forms of dust. In this case, the workers had been given masks but didn't wear them continuously because of hot weather.

continued .../3

## The Possible Dangers in Renovating Old Buildings

.../continued from page 2

A wide range of activities have been associated with histoplasmosis outbreaks: construction, maintenance, renovation, excavation, caving and agricultural activities, among others. The common variable is the exposure to bird or bat droppings or contaminated soil. When buildings, particularly old houses, have previously sheltered colonies of bats or birds, appropriate measures should be taken before renovating to protect the health of persons in and around the area.



This outbreak highlights the importance of understanding the health risks associated with renovation of old houses in areas where bats or birds roost, and the importance of wearing a mask while doing this type of work.

### References:

CDC Morbidity and Mortality Weekly Report (MMWR). Histoplasmosis Outbreak Associated with the Renovation of an Old House -- Quebec, Canada, 2013. Weekly 3 Jan 2014 / 62(51); 1041-4; available at [www.cdc.gov](http://www.cdc.gov) | [Morbidity and Mortality Weekly Report \(MMWR\) search Histoplasmosis Outbreak](#)

For more information visit:

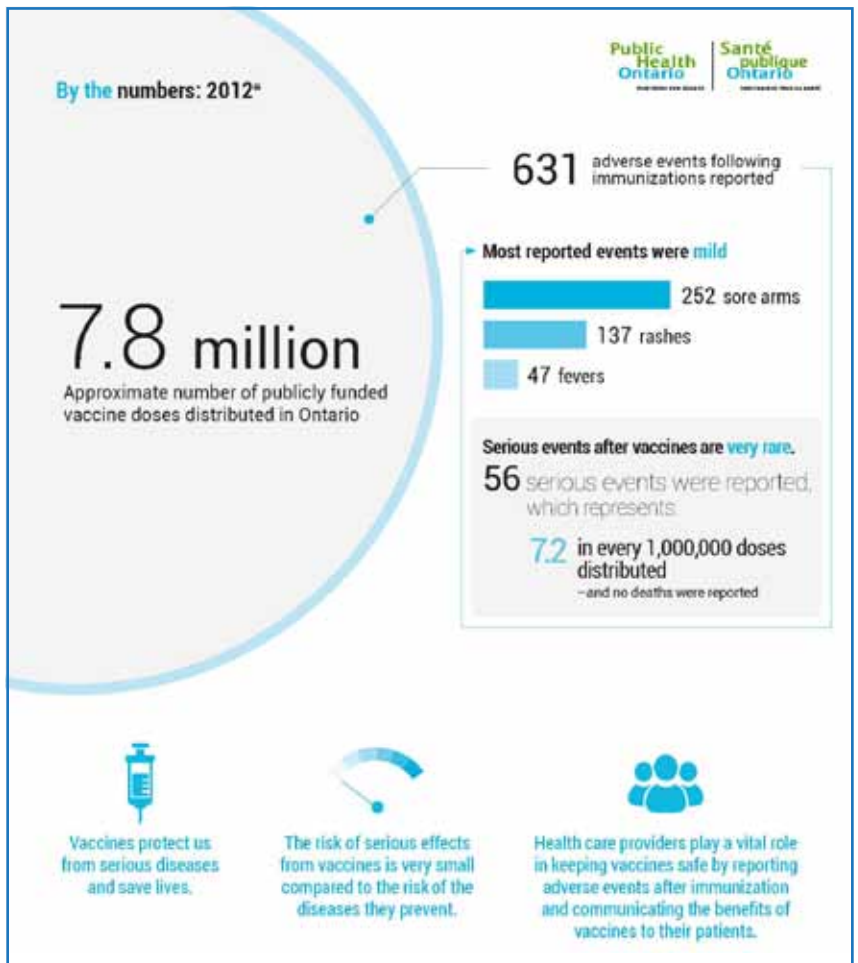
[www.ccohs.ca](http://www.ccohs.ca) | [oshanswers](#) | [Diseases](#) | [Histoplasmosis](#)

or call

Wanda Tonus, Public Health Inspector  
705-743-1000, ext. 285

## Report Adverse Events After Vaccinations

- 1 Advise patients to contact you if they experience an adverse event after vaccination.
- 2 Report adverse events to your local public health unit, using [Public Health Ontario's Report of Adverse Event Following Immunization Reporting Form](#). Visit [www.pcchu.ca](http://www.pcchu.ca) | [For Professionals](#) | [Health Professionals](#) | [Vaccines](#) and find in [Links](#)
- 3 For more information on how to report an adverse event, please refer to [Public Health Ontario's Adverse Event Following Immunization \(AEFI\) Reporting Form Provider Questions and Answers](#).



## Resources For HCPs

### The Public Health Agency of Canada TB-related Webinars Monday, March 24, 2014

1:00 p.m. - 2:00 p.m.  
Webinar on the most recent available TB surveillance reports: Tuberculosis in Canada, 2012 and TB Drug Resistance in Canada, 2012.

### Thursday, April 3, 2014

1:00 p.m. - 2:00 p.m.  
Webinar will be on an overview of the Canadian TB Standards, 7th Edition, where key changes in the new, recently released edition will be highlighted.

If you'd like to receive the webinar invitations and the TB edition of Canada Communicable Disease Report (CCDR), subscribe to CCDR at the link below. Once subscribed you will receive email notifications when new editions have been posted to the Agency website, including links to the specific articles.

[www.phac-aspc.gc.ca](http://www.phac-aspc.gc.ca) | Reports & Publications search [Canada Communicable Disease Report \(CCDR\)](#) select [Subscribe now](#) on the right navigation.

### FREE Lunch and Learn on Child Health for Nurses, Receptionists, Secretaries Wednesday, April 30, 2014

12:00 p.m. to 1:15 p.m.  
Peterborough County-City Health Unit,  
Board Room, 10 Hospital Drive

Learn NEW Information about:

- Enhanced 18 Month Well-Baby Visit,
- Breastfeeding,
- Nutrition for Healthy Term Infants,
- Oral Health, and
- Physical Literacy.



R.S.V.P. to Anita Watts by **April 16, 2014**  
705-743-1003, ext. 282 OR  
Fax: 705-741-4261  
Email: [awatts@pcchu.ca](mailto:awatts@pcchu.ca)

Registration is limited to 30 participants. **Lunch provided.**

**Looking for a specific health topic?**

Visit the FYI Newsletter archive at  
[www.pcchu.ca](http://www.pcchu.ca)

The Health Unit will be offering quarterly information sessions for Family Physicians, Nurse Practitioners and their nursing staff.

### What's New with the Immunization of School Pupils Act

Wednesday, May 28, 2014  
8:00 a.m. - 9:00 a.m.

### Influenza Update

Wednesday, September 24, 2014  
8:00 a.m. - 9:00 a.m.

### Antibiotic Resistant Organisms

Wednesday, December 10, 2014  
8:00 a.m. - 9:00 a.m.

All the information sessions will be held at the Peterborough County-City Health Unit, 10 Hospital Drive, Board Room

To register please call  
**705-743-1000, ext. 135**  
Refreshments Provided

## Health Events For Patients

### Prenatal Classes

Classes are ongoing from 7:00 p.m. to 9:00 p.m. (please call for class dates). All classes are held at the Peterborough County-City Health Unit, 10 Hospital Drive, Peterborough. The cost is \$50.00 and subsidies are available. Please let us know if the fee would prevent your patient from attending.



To register, call the Peterborough County-City Health Unit  
705-743-1000, ext. 254