

BED BUGS

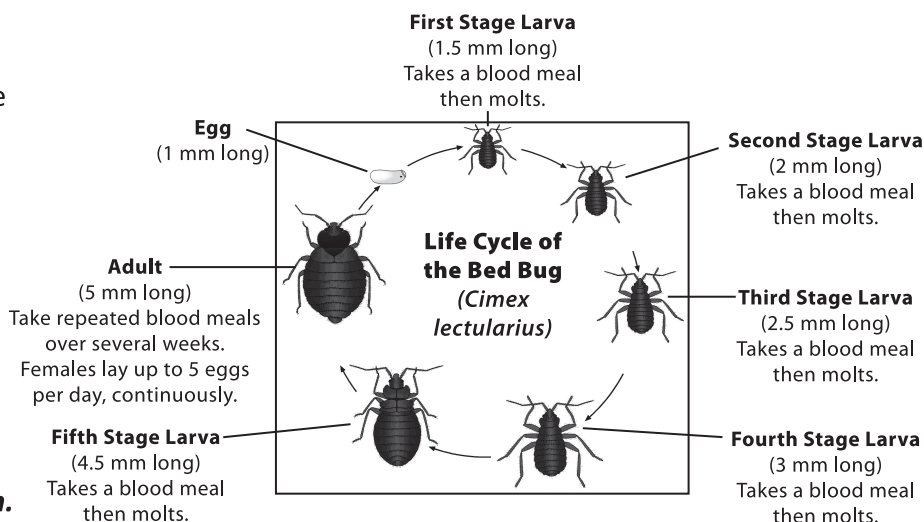
How to Submit a Sample for Identification

The Peterborough Public Health is able to help you identify bed bugs and provide you with information on prevention and treatment.

Steps to Bed Bug Identification

- ✓ Does your specimen resemble any of the stages of the bed bug lifecycle?
- ✓ Does your bedding have rusty or reddish blood smears?
- ✓ Are there black spots (bed bug feces) on your bedding?
- ✓ Are you experiencing any bites that occur overnight?

If so, you might have bed bugs and may need to prepare a sample for identification.



How to Prepare a Sample

DO NOT BRING IN LIVE SPECIMENS

- ✓ Collect the specimen. Adults are the easiest to see and identify. Infestations will initially be localized around beds but bed bugs may end up scattered around the bedroom in crevices or upholstered furniture, possibly even moving to adjacent rooms or apartments.
- ✓ Do not squish the specimen, as it makes identification difficult.
- ✓ Do not tape the specimen down to anything as it makes handling the specimen more difficult.
- ✓ Place the specimen in a clear watertight container (e.g. baby food jar, jam jar, prescription pill bottle) with 70% rubbing alcohol. The alcohol will kill and preserve the specimen for identification.
- ✓ If a clear watertight container is not available, the specimen can be placed in a clear and tightly sealed sandwich bag with an alcohol wipe.

Where to Bring Your Sample

Peterborough Public Health
Jackson Square, 185 King Street
Peterborough, Ontario